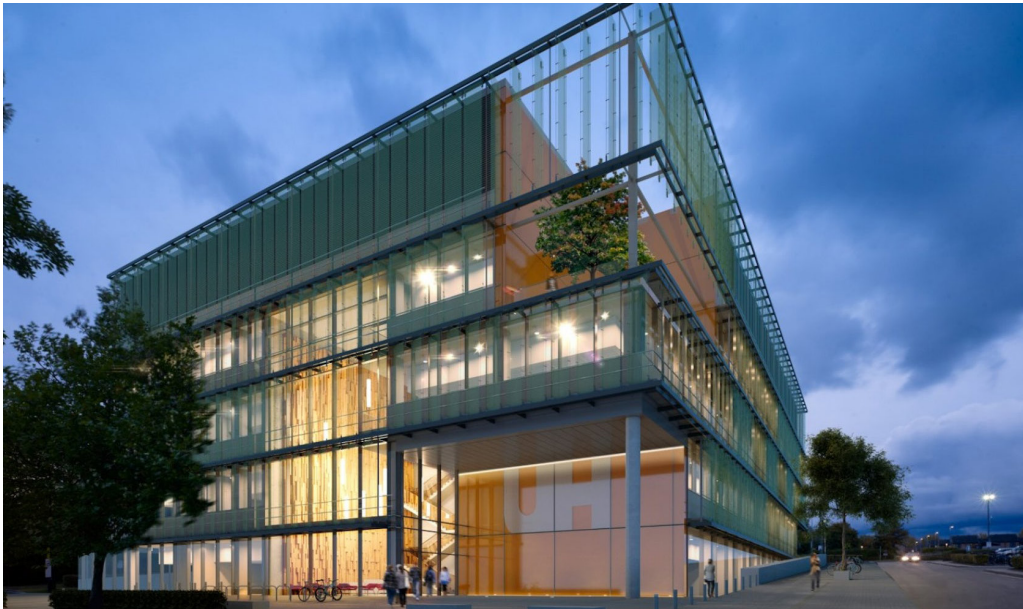




AV



University of Hertfordshire Science Building

Hewshott was engaged as part of the wider technology project team for the prestigious new building. The 9,000m² science building occupies a prominent site at the heart of the University of Hertfordshire's College Lane Campus. A major element of the project was to provide not only a fixed lab space but total flexibility to prepare it for the future.

As a first for the University, a first of this scale in Europe and also a first for the selected manufacturer and integrator, an entire AV over IP building like this required significant time and effort in early co-ordination and delivery planning.

The requirements were to deliver lab spaces that were enhanced by technology and a building that could cope with changing demands. Through significant co-ordination with the University's IT team. The physical and logical network designs were completed with the solution already in mind.

This preparation work made the overall delivery much smoother and reduced the on site time required for implementation.

As well as design services, the Hewshott team provided project management plus full testing and commissioning services to deliver a tailored solution.

